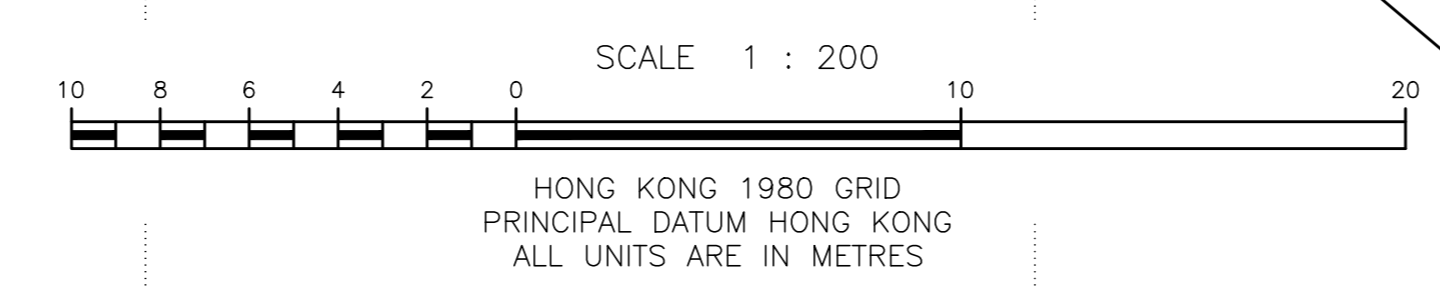


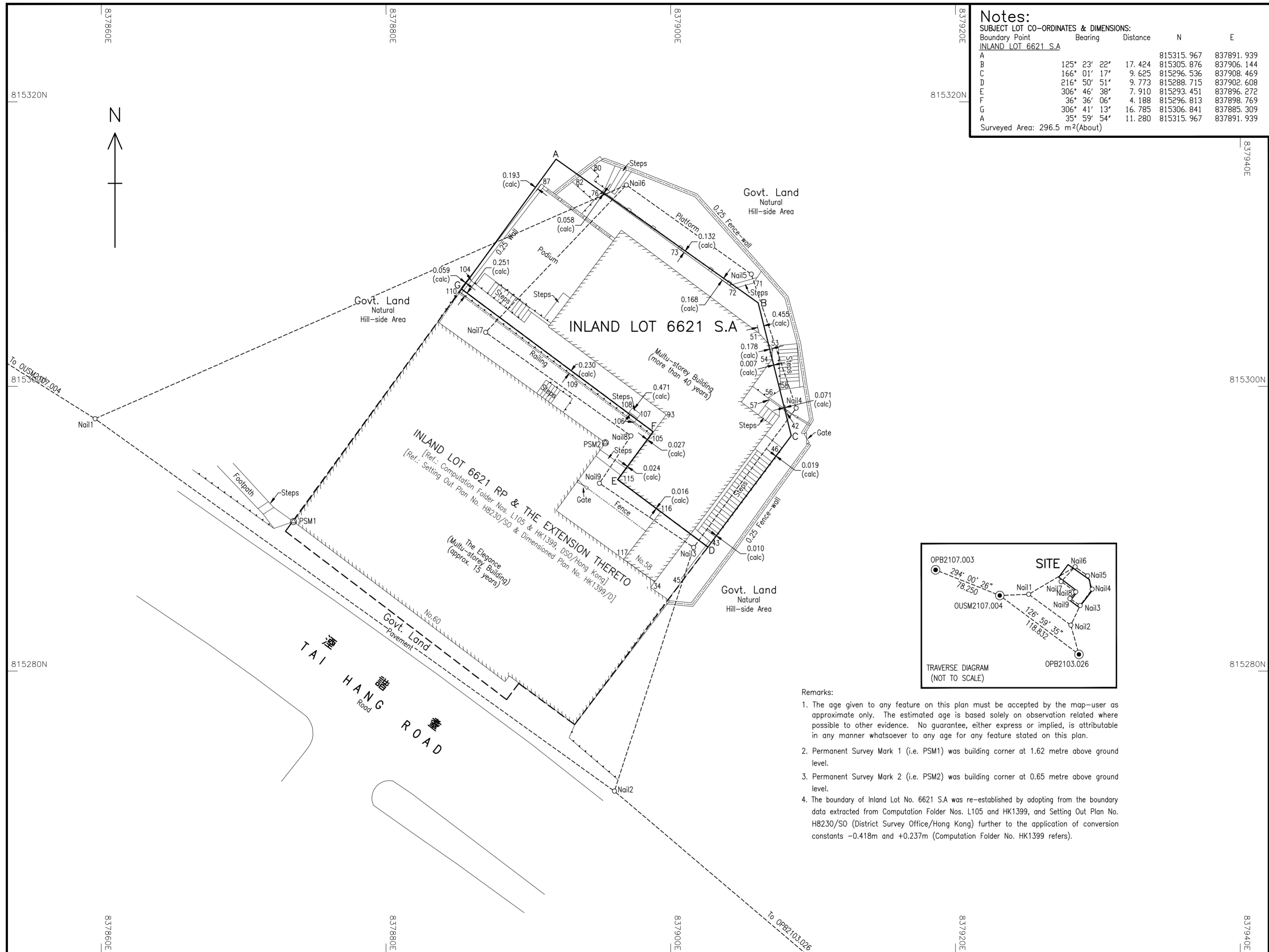


TREE SCHEDULE

Tree No.	Trunk Diameter	Height	Spread	Tree No.	Trunk Diameter	Height	Spread
11	0.22	6	5	199	0.15	6	4
12	0.39	9	7	1000	0.15	5	4
13	0.41	10	6	1101	0.21	7	6
14	0.37	8	6	1102	0.12	5	4
15	0.22	7	6	1103	0.24	7	5
16	0.12	4	4	1104	0.17	6	5
18	0.14	5	4	1105	0.10	7	4
19	0.27	8	5	1106	0.35	9	6
110	0.26	6	5	1107	0.11	5	5
111	0.10	5	4	1108	0.12	6	4
112	0.18	6	5	1109	0.28	11	7
113	0.18	5	5	1110	0.14	6	4
114	0.12	5	3	1111	0.13	5	3
115	0.20	7	5	1112	0.16	6	6
116	0.14	5	4	1113	0.16	6	8
117	0.14	4	4	1114	0.14	7	6
118	0.10	5	5	1115	0.13	5	3
119	0.15	6	4	1116	0.14	5	4
120	0.19	7	5	1117	0.26	8	6
121	0.14	6	4	1118	0.50	12	6
122	0.26	9	6	1119	0.60	14	9
123	0.16	5	4	1120	0.16	5	3
124	0.34	9	6	1121	0.11	6	3
125	0.11	5	5	1122	0.25	10	6
126	0.16	6	5	1123	0.55	11	6
127	0.21	6	5	1124	0.23	7	4
128	0.10	5	3	1125	0.14	6	5
129	0.20	6	5	1126	0.13	6	4
130	0.15	5	3	1127	0.40	14	6
131	0.17	6	6	1128	0.29	8	5
132	0.10	5	4	1129	0.14	5	5
133	0.25	5	5	1130	0.14	5	4
134	0.19	6	4	1131	0.25	11	6
135	0.39	12	8	1132	0.29	9	7
136	0.10	6	3	1133	0.15	4	2
137	0.10	6	3	1134	0.15	5	5
138	0.14	6	5	1135	0.18	8	4
139	0.11	5	4	1136	0.50	11	7
140	0.27	8	5	1137	0.13	5	5
141	0.15	5	5	1138	0.15	6	4
142	0.16	6	4	1139	0.16	7	6
143	0.22	5	5	1140	0.15	8	5
144	0.18	6	3	1141	0.27	8	6
145	0.11	5	3	1142	0.32	10	6
146	0.39	9	6	1143	0.29	8	6
147	0.26	7	4	1144	0.15	7	4
148	0.50	12	7	1145	0.14	7	6
149	0.11	5	5	1146	0.28	9	6
150	0.13	5	4	1147	0.28	10	8
151	0.27	7	5	1148	0.16	6	5
152	0.34	8	6	1149	0.13	6	4
153	0.12	5	5	1150	0.22	6	5
154	0.45	10	9	1151	0.16	7	5
155	0.35	9	8	1152	0.20	7	5
156	0.44	9	10	1153	0.25	7	5
157	0.16	8	5	1154	0.15	8	5
158	0.17	10	4	1155	0.32	11	7
159	0.11	4	3	1156	0.23	8	5
160	0.21	11	6	1157	0.24	5	3
161	0.49	12	8	1158	0.10	6	6
162	0.37	10	5	1159	0.10	5	4
163	0.22	9	6	1160	0.24	8	6
164	0.12	6	3	1161	0.16	5	3
165	0.13	7	3	1162	0.18	5	7
166	0.25	9	5	1163	0.14	7	3
167	0.13	4	3	1164	0.15	5	4
168	0.14	6	4	1165	0.15	7	3
169	0.16	7	5	1166	0.16	5	5
170	0.60	14	10	1167	0.14	6	6
171	0.17	7	6	1168	0.92	11	12
172	0.12	5	4	1169	0.25	6	6
173	0.10	5	4	1170	0.13	8	4
174	0.16	8	4	1171	0.17	9	5
175	0.15	6	4	1172	0.10	6	4
176	0.25	8	5	1173	0.15	7	5
177	0.12	6	3	1174	0.13	6	3
178	0.14	6	3	1175	0.11	6	3
179	0.13	5	5	1176	0.11	5	3
180	0.27	8	6	1177	0.12	6	5
181	0.15	7	4	1178	0.24	9	6
182	0.20	8	6	1179	0.34	10	7
183	0.11	5	4	1180	0.58	17	9
184	0.13	5	3	1181	0.14	6	3
185	0.57	12	9	1182	0.13	8	3
186	0.15	7	5	1183	0.48	12	8
187	0.14	5	6	1184	0.10	5	3
188	0.23	7	6	1185	0.20	5	3
189	0.11	5	5	1186	0.16	6	5
190	0.16	6	4	1187	0.19	9	6
191	0.10	5	4	1188	0.23	7	8
192	0.11	5	4	1189	0.53	14	15
193	0.15	7	4	1190	0.24	8	6
194	0.15	7	4	1191	0.43	11	7
195	0.15	8	4	1192	0.60	13	8
196	0.11	7	3	1193	0.35	10	9
197	0.11	6	3	1194	0.61	13	10
198	0.13	7	4				

Application Site



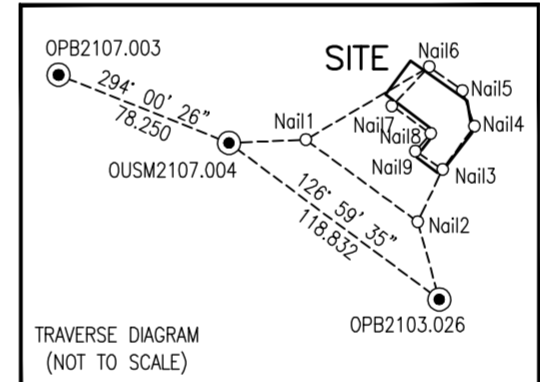


Notes:
SUBJECT LOT CO-ORDINATES & DIMENSIONS:

Boundary Point	Bearing	Distance	N	E
INLAND LOT 6621 S.A				
A	125° 23' 22"	17.424	815315.967	837891.939
B	166° 01' 17"	9.625	815296.536	837908.469
C	216° 50' 51"	9.773	815288.715	837902.608
D	306° 46' 38"	7.910	815293.451	837896.272
E	36° 36' 06"	4.188	815296.813	837898.769
F	306° 41' 13"	16.785	815306.841	837885.309
G	35° 59' 54"	11.280	815315.967	837891.939
Surveyed Area: 296.5 m ² (About)				

TRAVERSE:

Stations	Bearing	Distance	N	E
OUSM2107.004				
Nail1	122° 11' 40"	23.262	815297.726	837859.565
Nail2	125° 39' 14"	44.894	815271.558	837896.044
OPB2103.026	130° 22' 11"	50.857	815238.617	837934.791
Nail2				
Nail2			815271.558	837896.044
Nail3	18° 00' 06"	18.012	815288.689	837901.610
Nail4	36° 20' 00"	12.157	815298.483	837908.812
Nail5	341° 27' 10"	9.922	815307.890	837905.656
Nail6	305° 31' 54"	10.779	815314.155	837896.884
Nail1	246° 14' 14"	40.776	815297.726	837859.565
Nail6				
Nail6			815314.155	837896.884
Nail7	223° 40' 29"	14.312	815303.803	837887.001
Nail8	125° 29' 23"	12.531	815296.527	837897.205
Nail9	213° 31' 11"	3.997	815293.195	837894.998
Nail3	124° 16' 15"	8.001	815288.689	837901.610
PSM RADIATIONS:				
Surveyed Point				
From Nail1	Bearing	Distance	N	E
To PSM1	117° 23' 21"	15.703	815290.502	837873.508
From Nail2				
To PSM1	310° 03' 03"	29.441	815290.502	837873.508
From Nail7				
To PSM2	132° 42' 58"	11.445	815296.040	837895.409
From Nail8				
To PSM2	254° 47' 27"	1.860	815296.040	837895.409
RADIATIONS:				
Surveyed Point				
From Nail3	Bearing	Distance	N	E
To 34	227° 08' 21"	4.130	815285.880	837898.583
To 42	34° 19' 43"	11.547	815298.225	837908.122
To 43	74° 16' 16"	1.273	815289.034	837902.835
To 45	198° 12' 54"	2.390	815286.419	837900.863
To 46	41° 32' 29"	9.342	815295.681	837907.805
From Nail4				
To 51	333° 37' 54"	5.865	815303.738	837906.207
To 53	338° 09' 16"	4.566	815302.721	837907.113
To 54	334° 02' 34"	3.836	815301.932	837907.133
To 56	289° 32' 18"	2.102	815299.186	837906.831
To 57	287° 11' 28"	1.952	815299.060	837906.947
To 58	319° 47' 45"	1.675	815299.762	837907.731
From Nail5				
To 71	165° 55' 14"	0.645	815307.890	837905.656
To 72	230° 05' 15"	1.579	815306.877	837904.445
To 73	289° 32' 25"	5.459	815309.716	837900.511
From Nail6				
To 76			815314.155	837896.884
To 80	253° 18' 57"	1.832	815313.629	837895.129
To 82	295° 52' 37"	2.793	815315.374	837894.371
To 87	273° 18' 25"	3.796	815314.374	837893.094
To 87	270° 43' 47"	5.968	815314.231	837890.916
From Nail7				
To 93	114° 29' 53"	13.949	815298.020	837899.693
To 104	344° 30' 34"	3.755	815307.423	837885.997
To 105	121° 46' 02"	13.687	815296.598	837898.637
To 106	121° 07' 52"	12.213	815297.490	837897.454
To 107	117° 49' 59"	12.307	815298.058	837897.883
To 108	117° 16' 28"	11.596	815298.490	837897.307
To 109	118° 02' 54"	7.290	815300.376	837893.434
To 110	326° 38' 50"	3.439	815306.677	837885.109
From Nail9				
To 115	79° 27' 00"	1.316	815293.196	837894.997
To 116	115° 11' 29"	4.739	815291.179	837899.285
To 117	162° 26' 15"	5.607	815287.850	837896.689



- Remarks:
- The age given to any feature on this plan must be accepted by the map-user as approximate only. The estimated age is based solely on observation related where possible to other evidence. No guarantee, either express or implied, is attributable in any manner whatsoever to any age for any feature stated on this plan.
 - Permanent Survey Mark 1 (i.e. PSM1) was building corner at 1.62 metre above ground level.
 - Permanent Survey Mark 2 (i.e. PSM2) was building corner at 0.65 metre above ground level.
 - The boundary of Inland Lot No. 6621 S.A. was re-established by adopting from the boundary data extracted from Computation Folder Nos. L105 and HK1399, and Setting Out Plan No. H8230/SO (District Survey Office/Hong Kong) further to the application of conversion constants -0.418m and +0.237m (Computation Folder No. HK1399 refers).

I, LEUNG Chi-yan, George, an Authorized Land Surveyor registered under the Land Survey Ordinance (Cap. 473), hereby certify that this survey record plan has been prepared from land boundary surveys that were carried out by me, or under my direct supervision in conformity with the Code of Practice approved by the Land Survey Authority under the above Ordinance, and that this plan correctly represents that survey completed on the 03rd day of July, 2019.

Dated this 08th day of January, 2020.

(Signature)
 LEUNG Chi-yan, George
 MIS.Aust MNZIS MHKIS MRICS RPS(S) ACIARB
 Authorized Land Surveyor

Gland Gland Surveying, Planning & GIS Co. Ltd.
 創領測量規劃及地理訊息系統有限公司

Survey District: HONG KONG
 Date of Survey: July 2018
 Scale: 1:200 Field Bk.: GL1965
 Survey Sheet No: 11-SE-11A
 Reference SRP: NIL

PLAN OF
 INLAND LOT No. 6621 S.A

FOR OFFICIAL USE

Survey Record Plan No.: SRP/HK/054/1965-01/D1